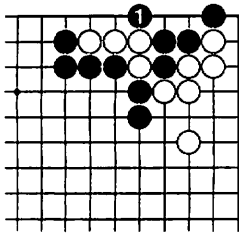
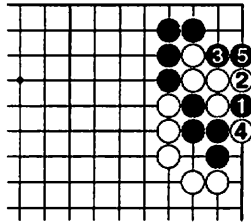


Premier niveau : solutions

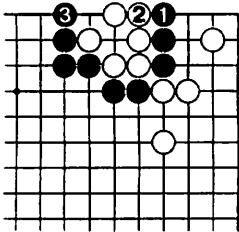
SEMEAI



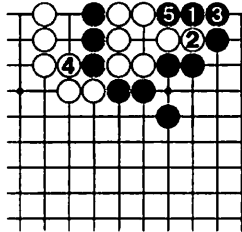
1



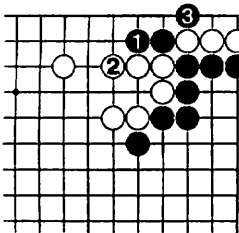
2



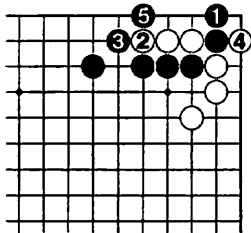
3



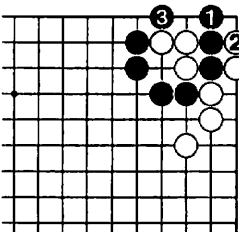
4



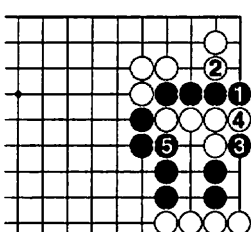
5



6



7



8

FUSEKI

EXTENSIONS

L'ordre d'importance des extensions est le suivant :
D - B - A - C

D. Deux shimari face à face : extension très urgente.

B. Shimari noir bien orienté, shimari blanc orienté vers le haut, mais sur la 4ème ligne : bonne extension.

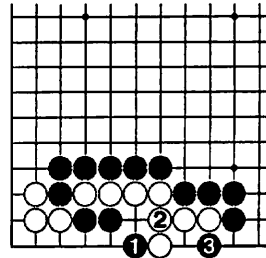
A. Deux hoshi : pourquoi pas cette extension ?

C. Coin noir incomplet (le shimari est prioritaire à l'extension), shimari blanc orienté vers le haut et en position basse (sur la 3ème ligne) : pas d'urgence !

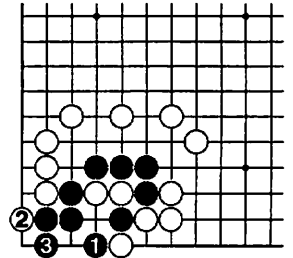
Deuxième niveau : solutions

TESUJI & TSUME GO

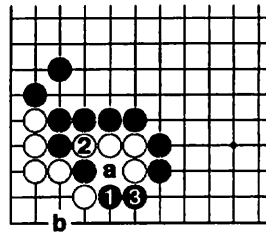
ENTRAINEMENT AU SNAP-BACK



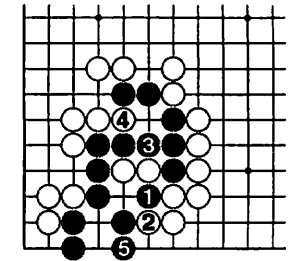
1



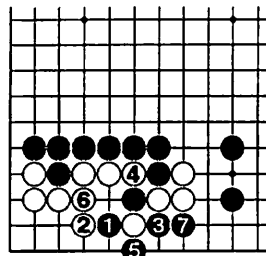
2



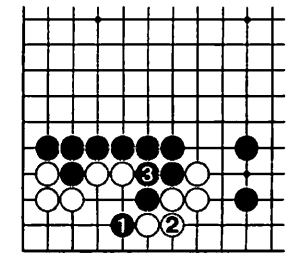
3 : Si blanc 2 en "a" noir 3 ; si blanc 2 en "b", noir 3



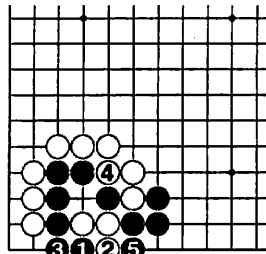
4



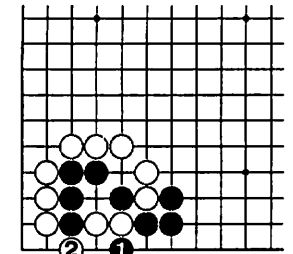
5



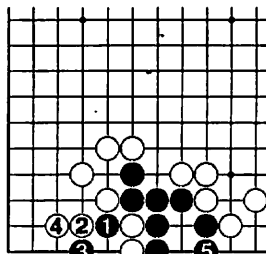
5 : Variante



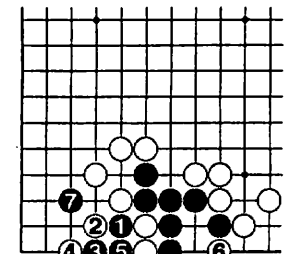
6



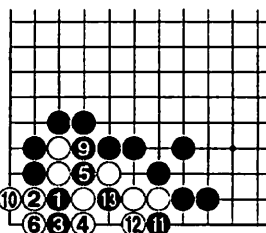
6 : Mauvais



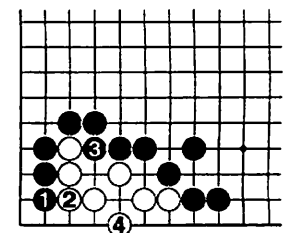
7



7 : Variante

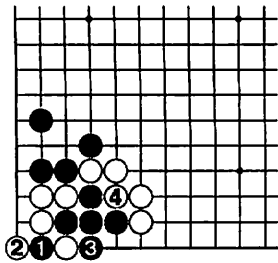


8 : 7 en 1, 8 en 3

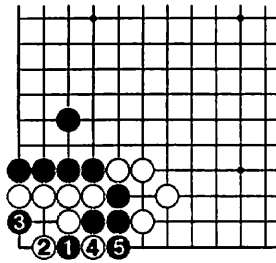


8 : Mauvais

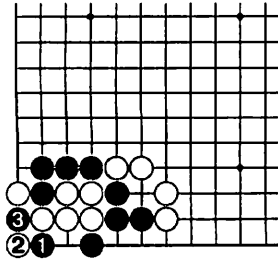
PROBLÈMES DE KO



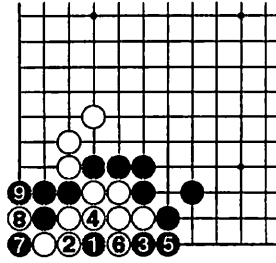
9 : ⑤ prend le ko



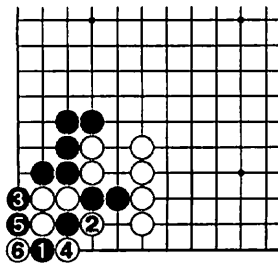
10



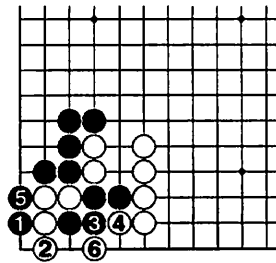
11



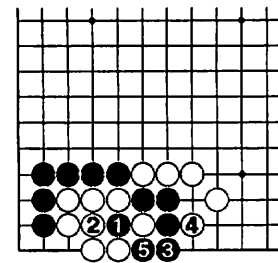
12



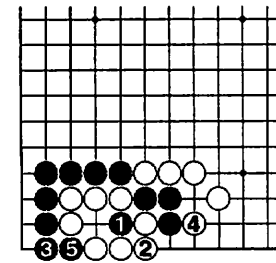
13



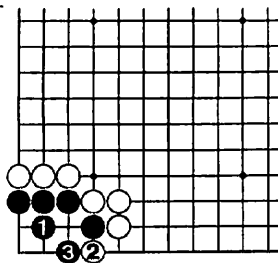
13 : Mauvais



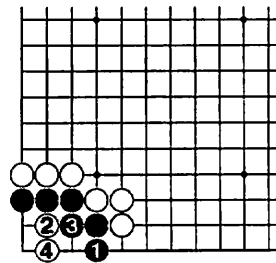
14



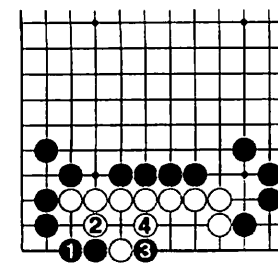
14 : Variante



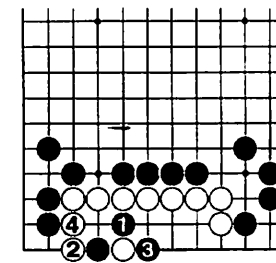
15



15 : Mauvais



16



16 : Mauvais

YOSE

8	1	6
3	5	7
4	9	2

围棋死活 300 例

«Weiqi sihuo 300 li»